

# New Sewer & Garbage Account Information for Residential Accounts

(Parks of Alvarado residents only)

Welcome to the City of Alvarado! We hope this packet of information will be helpful to you.

You receive your water service from Johnson County Special Utility District and the City of Alvarado provides your sewer and garbage service. Below is detailed information about each of those services.

## SEWER

Residential sewer rates are as follows: \$27.59 base rate per month and then \$6.43 for each 1,000 gallons with a cap of \$91.89. If you ever have sewer stoppage issues, please contact our office at 817-790-3351 (option #1) and City crews will respond as quickly as possible.

## GARBAGE

Residential garbage is charged at a rate of \$11.55 plus tax per month and is picked up weekly and the weekday is determined by your address. Please have your garbage cart(s) at the curb by 6:30 a.m. All trash must be bagged and fit within the cart that is provided and anything sitting on top of or beside the cart will not be picked up unless it is a bulk pick up week. Please refer to the pick-up schedule to find information about Bulk Garbage. If you need additional carts (\$8.99 per month per extra cart), please call 817-790-3351 to order. Up to two additional carts are allowed per household. Also be aware that for new construction homes it may take up to two weeks for your first cart to be delivered once you have contacted the City of Alvarado, so any trash that you have before its arrival may be placed in bags at the curb for pick up. After trash removal, all trash/recycle containers need to be stored so as not to be visible from the front of the premises. If you should close your water account and move out, please do not take any carts with you. They are to remain at the residence.

## RECYCLE

Curbside recycling service is provided to our customers at a rate of \$4.46 plus tax per month and will be picked up weekly on the same weekday as your trash. All recycle materials must fit within the 95-gallon cart that is provided and should not be bagged. Residential customers may opt out of recycle services by calling City Hall if they are 65 years of age or older. If you need an additional recycle cart (\$8.99 per month), please call 817-790-3351 to order. Again, if you have moved into a new construction home and do not have a recycle cart, one should be delivered to you within two weeks.

To order carts for new service, you may contact City Hall at 817-790-3351 (option #1) or you may complete the following request form and e-mail it to [pattersonl@cityofalvarado.org](mailto:pattersonl@cityofalvarado.org) or [duncand@cityofalvarado.org](mailto:duncand@cityofalvarado.org). To set up your water service, call Johnson County Special Utility District (J.C. SUD) at 817-760-5200.



**Request for Garbage & Recycle Cart**  
(Parks of Alvarado residents only)

Name \_\_\_\_\_

Address \_\_\_\_\_

Date of Move-in \_\_\_\_\_

Phone # \_\_\_\_\_

E-mail \_\_\_\_\_

# 2025 Bulk Schedule

## JANUARY 2025

S	M	T	W	T	F	S
			1	2	3	4
5	6	7	8	9	10	11
12	13	14	15	16	17	18
19	20	21	22	23	24	25
26	27	28	29	30	31	

## FEBRUARY 2025

S	M	T	W	T	F	S
						1
2	3	4	5	6	7	8
9	10	11	12	13	14	15
16	17	18	19	20	21	22
23	24	25	26	27	28	

## MARCH 2025

S	M	T	W	T	F	S
						1
2	3	4	5	6	7	8
9	10	11	12	13	14	15
16	17	18	19	20	21	22
23	24	25	26	27	28	29
30	31					

## APRIL 2025

S	M	T	W	T	F	S
			1	2	3	4
5	6	7	8	9	10	11
12	13	14	15	16	17	18
19	20	21	22	23	24	25
26	27	28	29	30		

## MAY 2025

S	M	T	W	T	F	S
					1	2
3	4	5	6	7	8	9
10	11	12	13	14	15	16
17	18	19	20	21	22	23
24	25	26	27	28	29	30
31						

## JUNE 2025

S	M	T	W	T	F	S
						1
2	3	4	5	6	7	8
9	10	11	12	13	14	15
16	17	18	19	20	21	22
23	24	25	26	27	28	29
30	31					

## JULY 2025

S	M	T	W	T	F	S
			1	2	3	4
5	6	7	8	9	10	11
12	13	14	15	16	17	18
19	20	21	22	23	24	25
26	27	28	29	30	31	

## AUGUST 2025

S	M	T	W	T	F	S
					1	2
3	4	5	6	7	8	9
10	11	12	13	14	15	16
17	18	19	20	21	22	23
24	25	26	27	28	29	30
31						

## SEPTEMBER 2025

S	M	T	W	T	F	S
						1
2	3	4	5	6	7	8
9	10	11	12	13	14	15
16	17	18	19	20	21	22
23	24	25	26	27	28	29
30	31					

## OCTOBER 2025

S	M	T	W	T	F	S
			1	2	3	4
5	6	7	8	9	10	11
12	13	14	15	16	17	18
19	20	21	22	23	24	25
26	27	28	29	30	31	

## NOVEMBER 2025

S	M	T	W	T	F	S
						1
2	3	4	5	6	7	8
9	10	11	12	13	14	15
16	17	18	19	20	21	22
23	24	25	26	27	28	29
30						

## DECEMBER 2025

S	M	T	W	T	F	S
						1
2	3	4	5	6	7	8
9	10	11	12	13	14	15
16	17	18	19	20	21	22
23	24	25	26	27	28	29
30	31					

**Zone 1:** North of Hwy. 67; on Chris Ct., Janis St., Helen, Liesa or Lorie.

**Zone 2:** All other areas

You can also find your collection day at [CityofAlvarado.org/255/Trash-Recycle-Bulk-Schedule](http://CityofAlvarado.org/255/Trash-Recycle-Bulk-Schedule).

■ Holidays
 ■ Zone 1 Brush & Bulk
 ■ Zone 2 Brush & Bulk

**Republic Services**

**254.687.2456**

©2024 Republic Services, Inc.



Sustainability in Action



# Recycling, Yard Waste and Bulk Collection



**Garbage:** Every home receives a 95-gallon cart for garbage that is collected once a week. Visit [CityofAlvarado.org](http://CityofAlvarado.org) for your service day. 95-gallon carts hold approximately 10 13-gallon kitchen-sized bags. All trash waste must be bagged and contained within the cart. Any bagged waste that does not fit inside the cart is considered bulk and will be picked up separately on its designated day (see calendar for schedule).

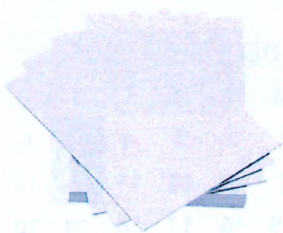
**Recycling:** Every home receives a 95-gallon cart for recycling that is collected once a week on your garbage collection day. Recycling items should not be bagged, as plastic bags are contamination and not accepted at the recovery facility.

Additional garbage or recycling carts are available to residents for a fee (maximum of 3 per home or business). Contact Utility Billing at [817.790.3351](tel:817.790.3351) or [CityofAlvarado.org](http://CityofAlvarado.org) for details.

Small businesses wanting to set up commercial hand pickup services with a 96-gallon cart for trash and/or recycling, contact Republic Services at [254.687.2456](tel:254.687.2456) for assistance.

**Bulk Trash (Residential Only):** Includes bagged trash that does not fit in the cart, yard waste, mattresses, appliances (with all CFC and other refrigerants removed), water tanks, furniture and other similar items with weights and/or volumes greater than those allowed for the waste cart supplied. All small tree trimmings must be cut no more than 3 feet in length and bundled to weigh no more than 35 pounds. Total bulk trash per pickup is 3 cubic yards. Visit [CityofAlvarado.org](http://CityofAlvarado.org) to identify your collection zone and monthly collection day. For questions on acceptable items or collection day, call [254.687.2456](tel:254.687.2456).

## ✓ Items that can always be placed in your recycling cart



Paper



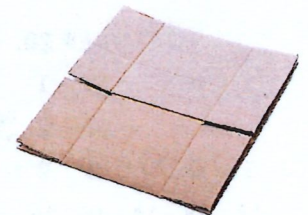
Plastic



Metal



Glass



Cardboard

## ✗ Items that can never be placed in your recycling cart



Plastic Bags



Soiled Paper



Polystyrene Foam



Clothing/Shoes



Greasy Pizza Boxes



Construction Waste



Electronics & Batteries



Food



Tools



Toys



Scrap Metal



Diapers



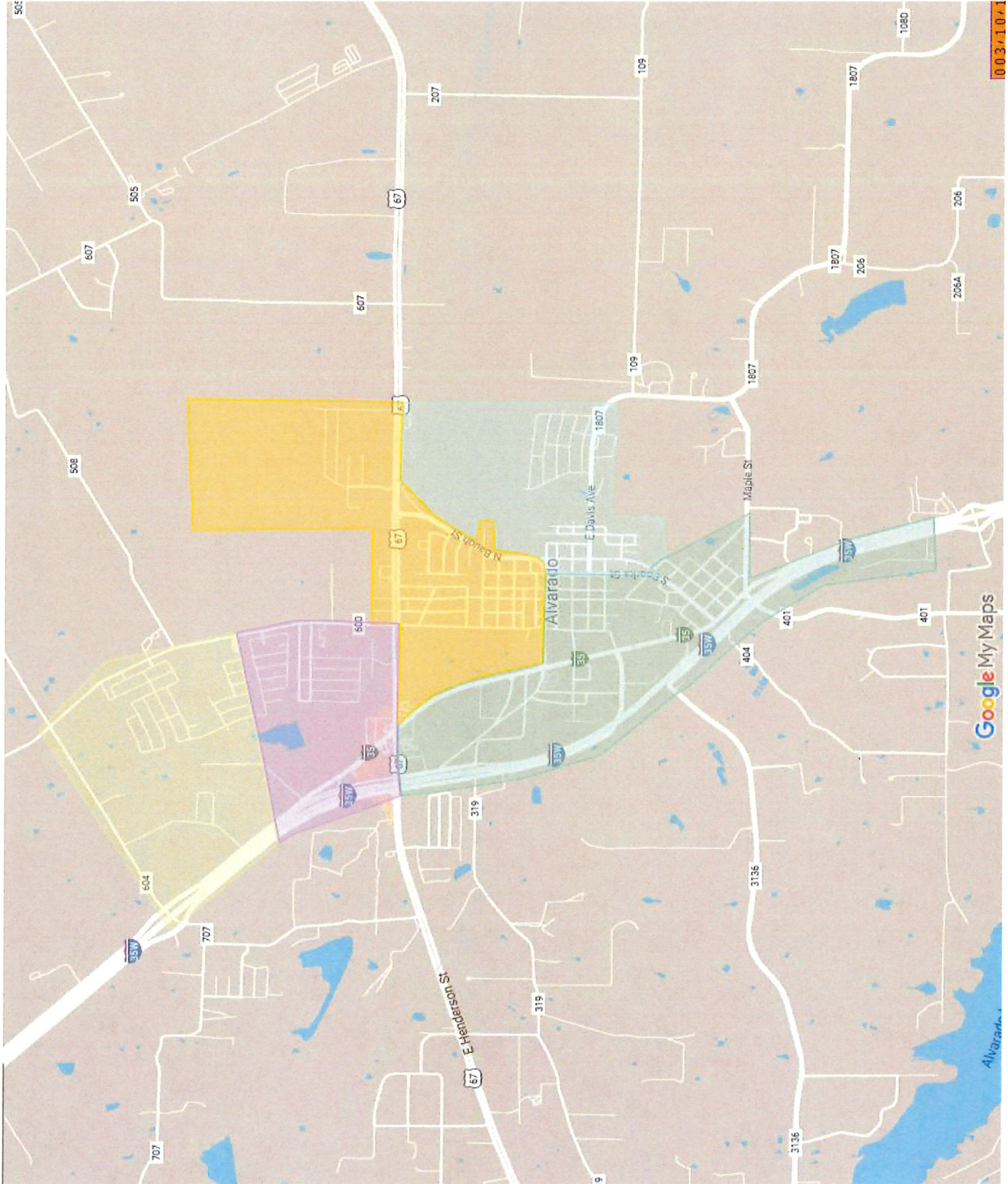
Yard Waste



Medical Waste

# Trash & Recycle

- Monday
- Tuesday
- Wednesday
- Thursday
- Friday



**ITASCA LANDFILL**  
**2559 FM 66**  
**Itasca, TX 76055**  
**254-687-2511**

From 35 South, Exit FM 66 (exit #8). Turn east and go 2 miles to first paved road on left.

Citizens are granted four (4) free landfill passes per year (July 1<sup>st</sup> to June 30<sup>th</sup>) to be used at the Republic Services Landfill in Itasca. Use of these passes is restricted to City of Alvarado residents and may only be used to dispose of items originating from your personal residence. No Commercial debris is acceptable.

Residents can obtain a landfill pass from City Hall, 104 W. College Street. It must be signed by the resident and be presented at the landfill with a current driver's license matching the pass.

Maximum load for each pass is limited to four (4) cubic yards of non-commercial solid waste and yard waste. This is approximately one pick-up-sized bed. Additional debris will be at a discounted rate of \$18.00 per cubic yard, plus taxes and fees.

Due to the size of larger trailers, they cannot be safely unloaded at the front convenience station. Instead, they must be unloaded at the landfill working face located at the rear of the property. Therefore, per OSHA requirements, a hard hat and safety vest are required on trailer loads for anyone exiting the vehicle while inside the landfill. Residents are permitted to bring their own vest/hard hat or can purchase for \$13.00 each.

The hours of operation are as follows:

Monday through Friday:	7:00 am to 4:00 pm
Saturday:	7:00 am to 12:00 pm

- Must be at the scale 30 minutes before landfill closure for any free hand-unload (truck bed) trips.
- Hand-unload trips (truck bed) exceeding the free four (4) cubic yards and/or trailer loads, residents must arrive one hour before landfill closure to process payment.

Holiday closures: New Year's Day, Thanksgiving Day, Christmas Day.

Holiday early closures: New Year's Eve, Christmas Eve